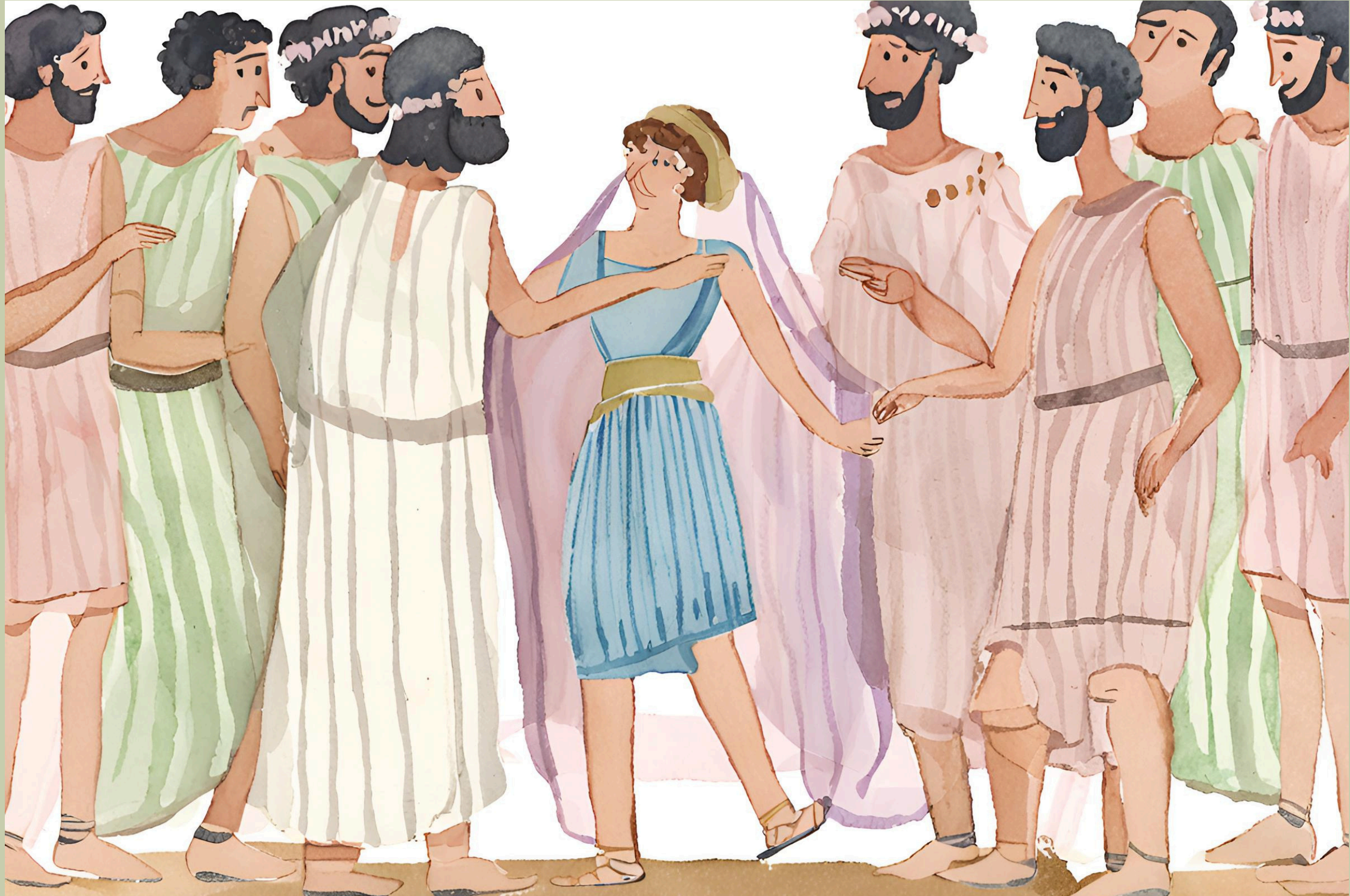


A watercolor illustration of a coastal landscape. In the foreground, there is a sandy beach with some dark green foliage on the left and a large, light green leaf on the right. The middle ground features a blue bay or inlet, with a large, green and brown mountain range in the background. The sky is a mix of light blue and white, suggesting a bright, slightly hazy day. The overall style is soft and artistic, typical of watercolor painting.

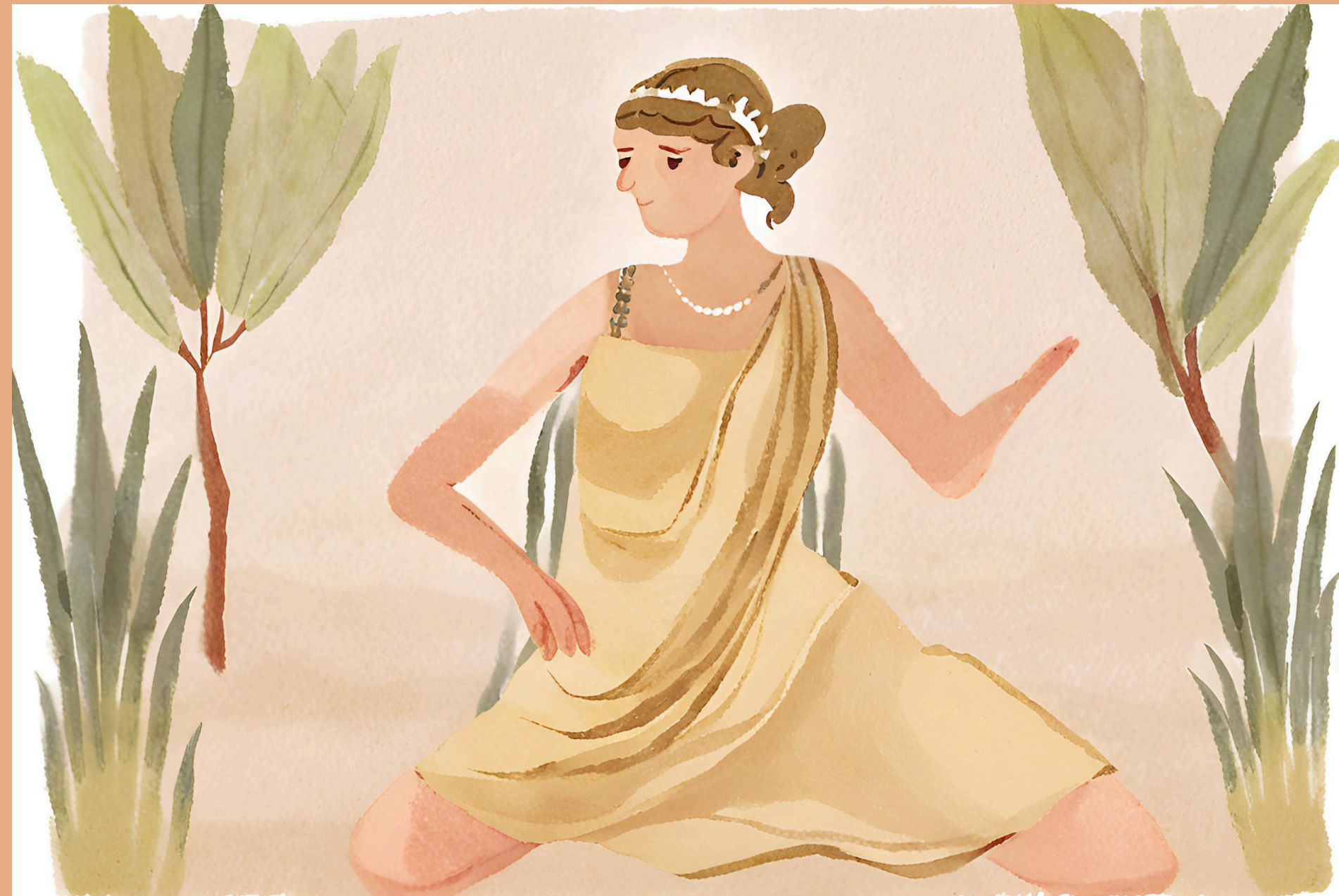
# L'Odyssea

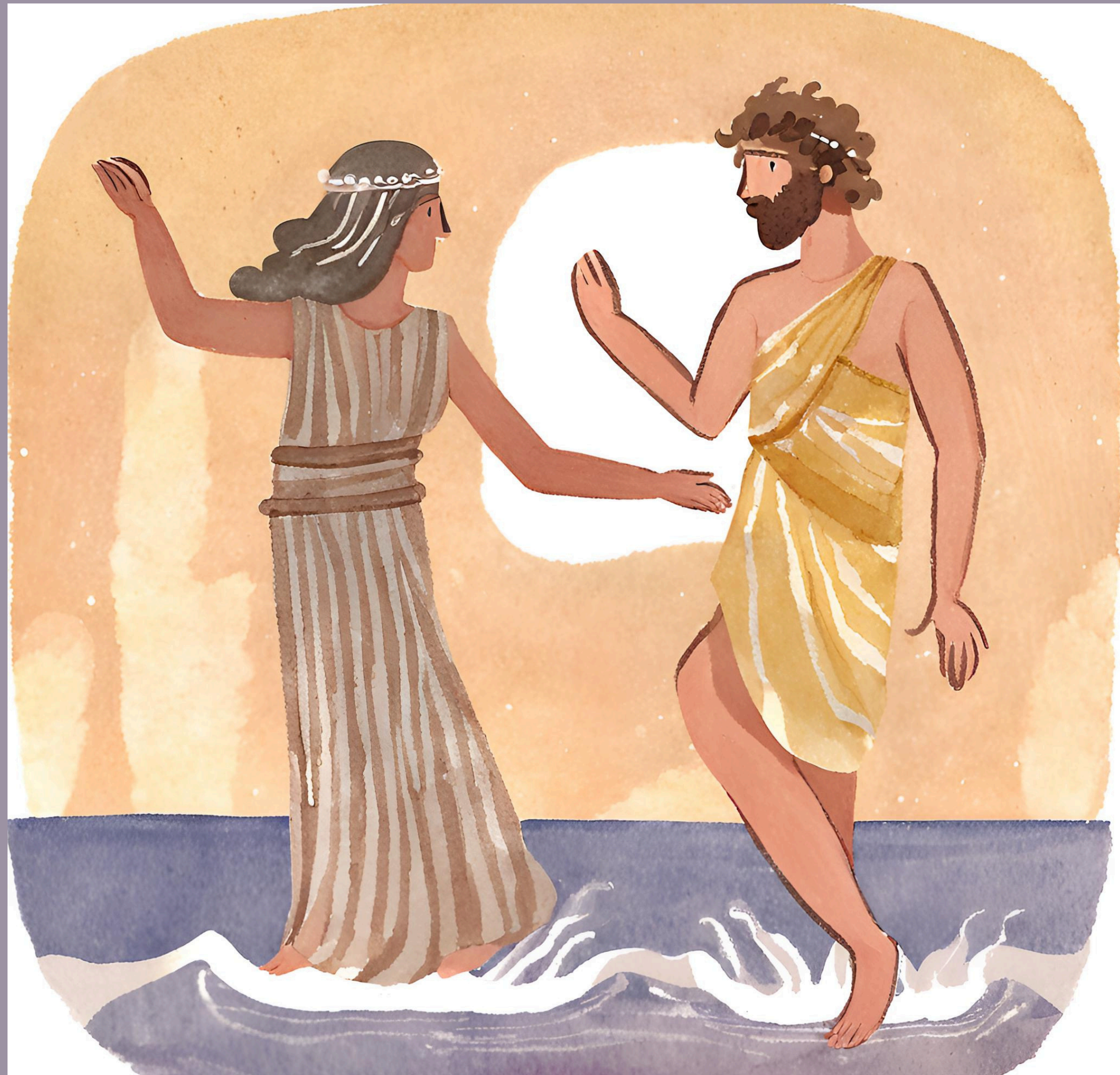
Silent Book



















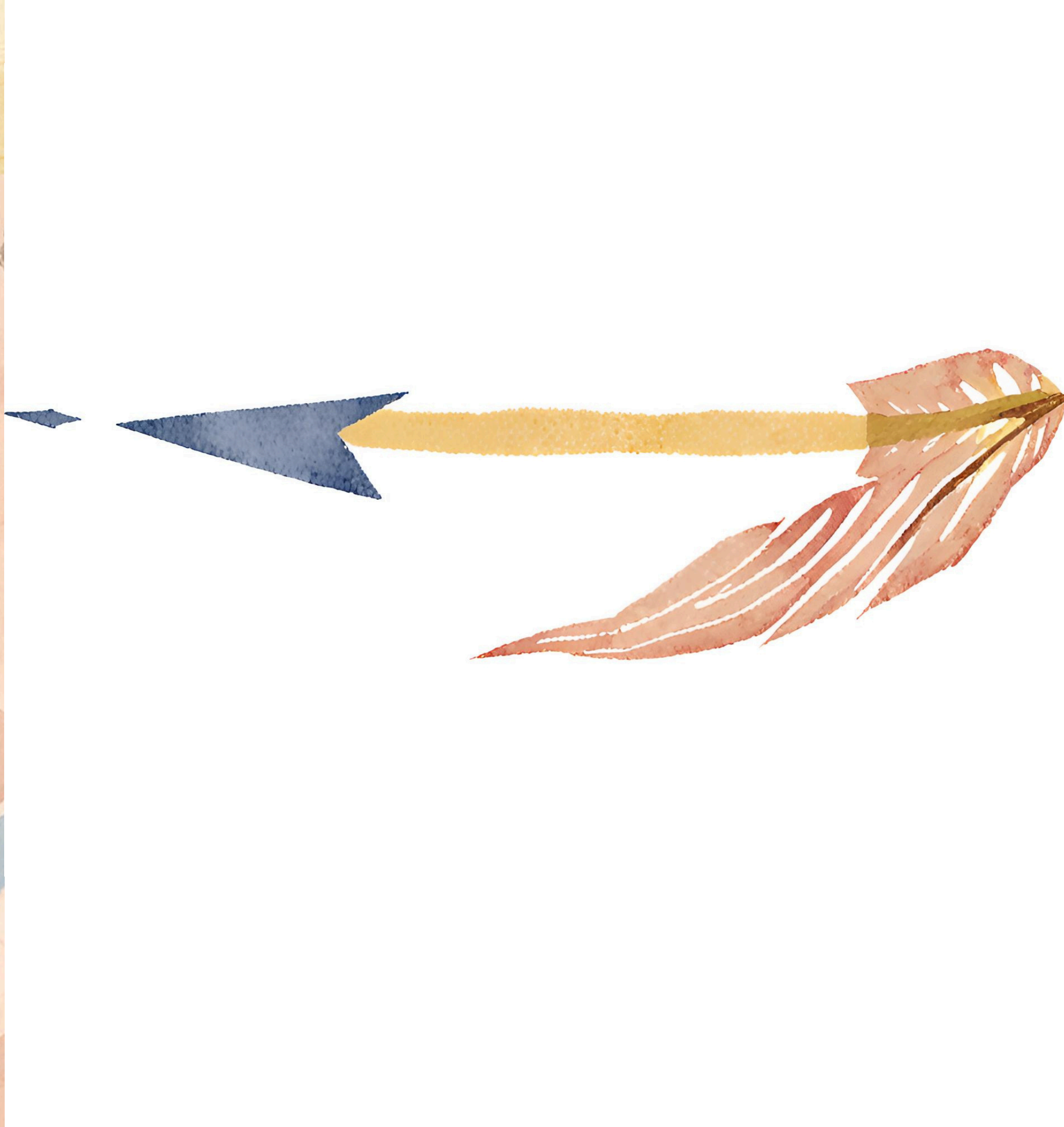


















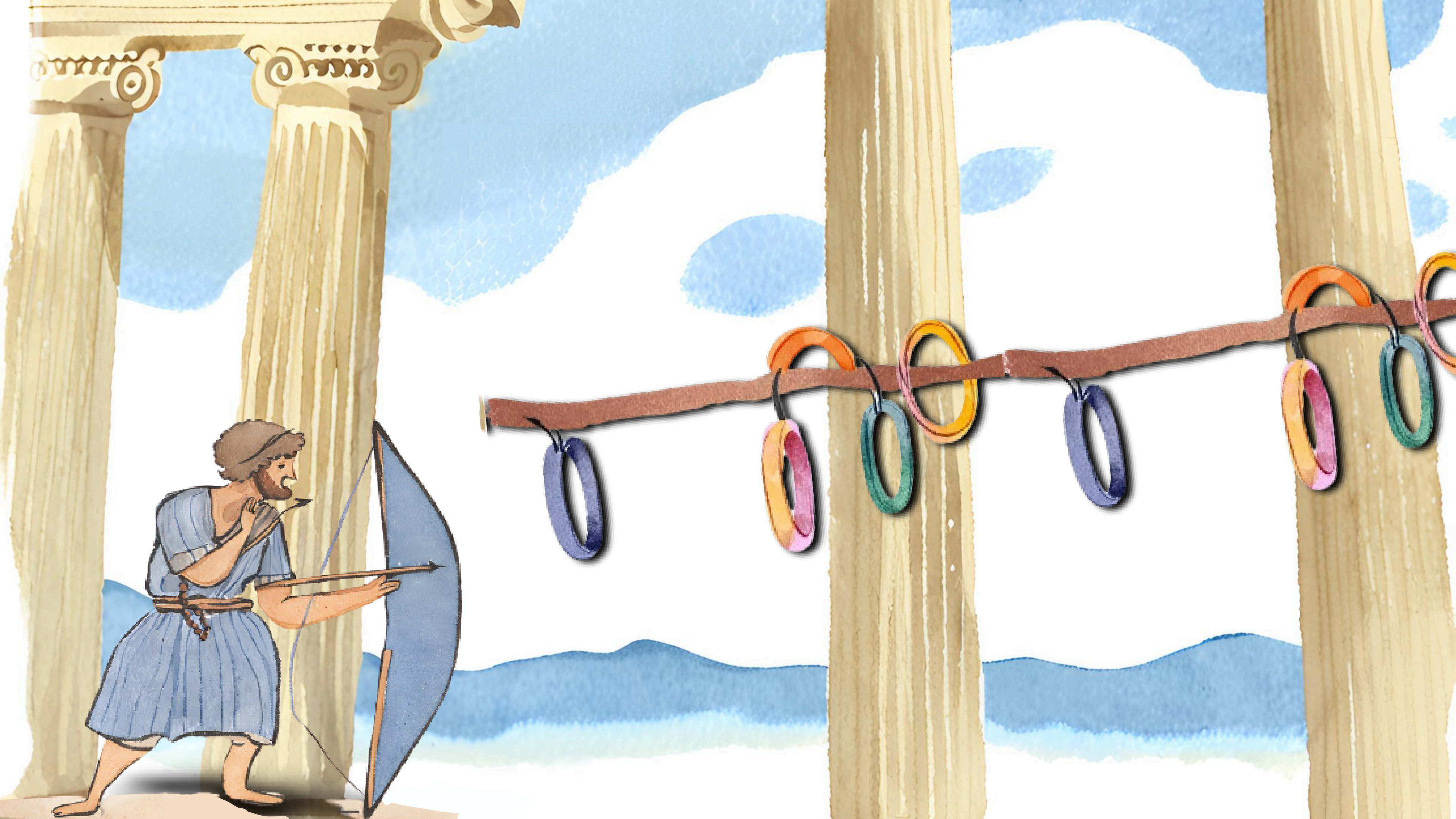


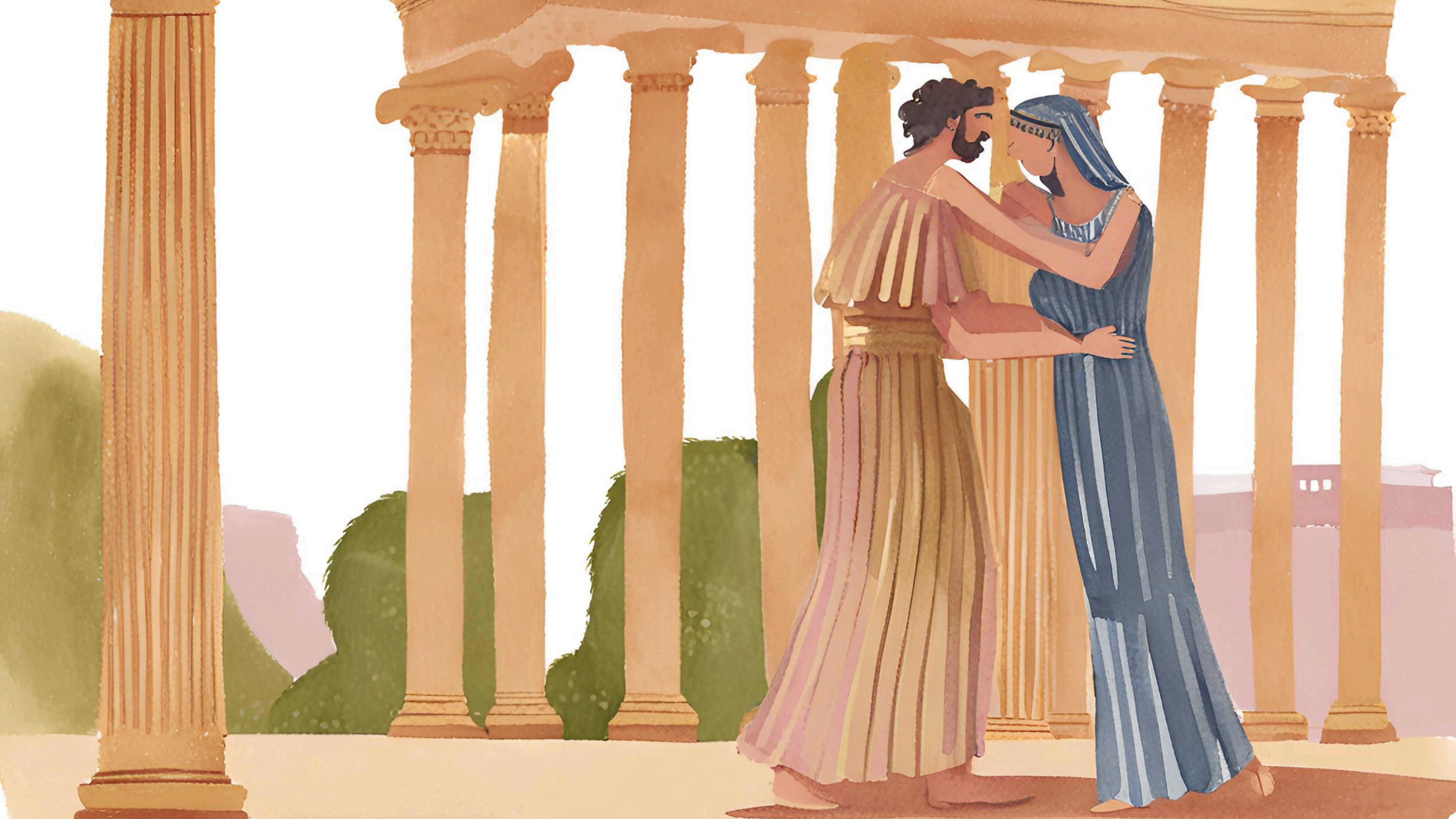














# **Classe 1 N**

**anno scolastico 2023/2024**

**Prof.ssa Paola Scudieri**

**Prof.ssa Monica Burgio**

**Prof.ssa Federica Cambi**

**con la collaborazione dell'Oepac Giusi Giovino**